

R·M·D
KWIKFORM

Bringing
structures
to life



PRODUCT BROCHURE

Rapid Bar Tie

Rapid Bar Tie An exceptionally versatile and cost-effective tie



Product Overview

A comprehensive range of accessories and load capacities make the RMD Kwikform Rapid Bar Tie exceptionally versatile and cost-effective.

Faster

- Supplied in standard lengths or cut to size to suit your requirements
- Developed as the most versatile and cost effective tie for all formwork applications

Safer

- Safe working loads of 110 and 200 kN

Easier

- Available in two stock diameters - 15mm and 20mm
- A wide range of accessories, providing unrivalled scope for developing solutions to complex or unusual applications
- 26, 32, 40 and 50mm diameter Rapid Bar Ties are available to special order
- Self cleaning threads



Rapid Bar Tie An exceptionally versatile and cost-effective tie



Features & Benefits

Vast inventory of Rapid Bar Tie and accessories, combined with our extensive worldwide distribution network means we can fulfil the most urgent requirements from stock.

- **Secure fixings**
 Contributing to safe reliable forming solutions.
- **Self cleaning**
 Speeding up assembly and reducing costs.
- **Quality accessories**
 Helping you achieve the quality of finish you require.



Rapid Bar Tie An exceptionally versatile and cost-effective tie



In Detail



Secure fixings

Pressed standard waler plate with nailing holes allowing secure fixing to formwork.



Quality accessories

Plastic cones set the conduit tube 10mm short of concrete wall surface, cones are easily removed for reuse. The clean impression left by the cone allows for an aesthetically pleasing cement plug.



Self cleaning

The coarse pitch and intermittent thread form means the wing nut runs down the bar quickly, self cleaning, removing dirt in the process, speeding up assembly and reducing costs.



Standard product

Our vast inventory of Rapid Bar Tie and accessories, combined with our extensive worldwide distribution network means we can fulfil the most urgent requirements from stock.

Rapid Bar Tie An exceptionally versatile and cost-effective tie



Project References



PROJECT
Jebel Ali Sewage Treatment Plant

REGION
MENA

STRUCTURES
Industrial



PROJECT
Birmingham New Street Station

REGION
Europe

STRUCTURES
Rail

Rapid Bar Tie An exceptionally versatile and cost-effective tie

Components

Rapid Bar Tie Wing Nut



Code	Description	Weight
BTX10001	Knock on Wing Nut (AWL = 110kN)	0.33kg
BTX10006	Knock on Nut - Hi Load (AWL = 110kN)	0.51kg

Standard Waler Plates



Code	Description	Weight
BTX10021	Waler Plate Standard - Orange (AWL = 80kN)	1.35kg
BTX10014	Waler Plate Light 55kN - Plated (AWL = 55kN)	1.13kg

Rapid Bar Tie Hexagon Nut



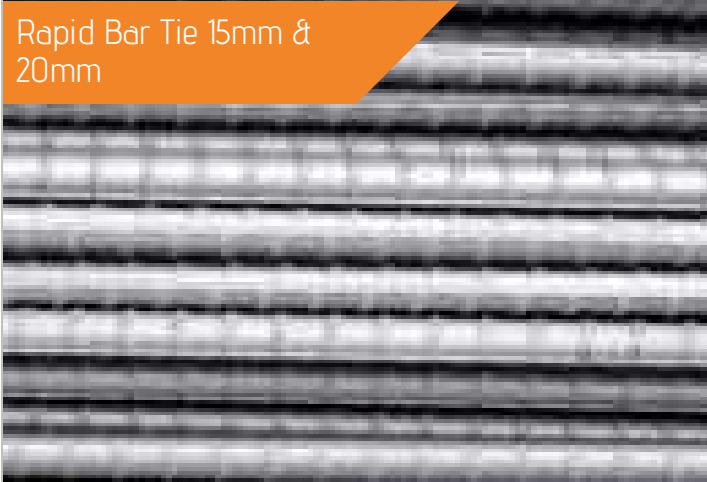
Code	Description	Weight
BTX10017	Nut - Hexagon 50mm	0.16kg
BTX10005	Nut - Hexagon 20mm	0.40kg

AWL = 110kN (15mm dia.) AWL = 160kN dia (20mm dia.)

Rapid Bar Tie An exceptionally versatile and cost-effective tie

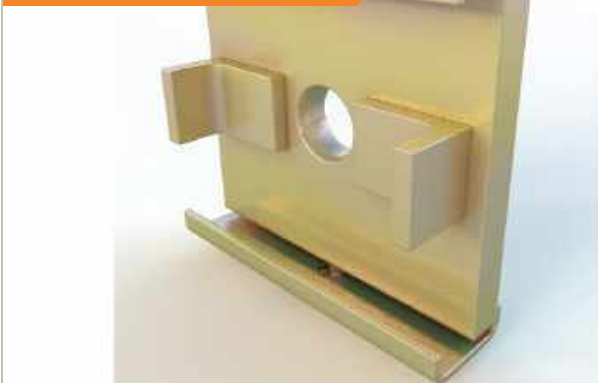
Components

Rapid Bar Tie 15mm & 20mm



Code	Description	Weight
BTX10100	Rapid Bar Tie 15mm x 1m	1.38kg
BTX10150	Rapid Bar Tie 15mm x 1.5m	2.12kg
BTX10175	Rapid Bar Tie 15mm x 1.75m	2.48kg
BTX10200	Rapid Bar Tie 15mm x 2m	2.83kg
BTX10250	Rapid Bar Tie 15mm x 2.5m	3.54kg
BTX10600	Rapid Bar Tie 15mm x 6m	8.50kg
BTX20015	Rapid Bar Tie per cut 15mm	-
BTX30015	Rapid Bar Tie per m 15mm	1.50kg
BTX40100	Rapid Bar Tie 20mm x 1m	2.46kg
BTX40150	Rapid Bar Tie 20mm x 1.5m	3.70kg
BTX40200	Rapid Bar Tie 20mm x 2m	4.90kg
BTX40600	Rapid Bar Tie 20mm x 6m	14.79kg
BTX20200	Rapid Bar Tie per cut 20mm	-
AWL = 110kN (15 mm dia.) AWL = 215kN (20mm dia.)		

Rapid Bar Tie High Load Water Plate



Code	Description	Weight
BTX10029	Water Plate - Hi Load (AWL = 160kN)	6.84kg

Rapid Bar Tie An exceptionally versatile and cost-effective tie

Components

Rapid Bar Tie Angle Waler Plate



Code	Description	Weight
HTU10001	Waler Plate - Angle 1 (AWL = 90kN)	1.47kg

Rapid Bar Tie Heavy Duty Waler Plate



Code	Description	Weight
BTX1004	Heavy Duty Waler Plate	1.76kg

Rapid Bar Tie Cones



Code	Description	Weight
BTX10018	Plastic Cone 10mm	0.01kg
BTX10008	Plastic Cone - Hi Load 26 degrees dia	0.01kg

Rapid Bar Tie An exceptionally versatile and cost-effective tie

Components

Rapid Bar Tie Tiesel Cone



Code	Description	Weight
FAU10092	Tiesel Cone 22 x 50mm	0.03kg

Rapid Bar Tie Aquafix Stopper



Code	Description	Weight
FAU10022	Aquafix Stopper 26mm	0.01kg
FAU10020	Aquafix Stopper 20mm	0.01kg
FAU10021	Aquafix Stopper 22mm	0.01kg
FAU10023	Aquafix Stopper 32mm	0.01kg

Rapid Bar Tie Flexible Hose

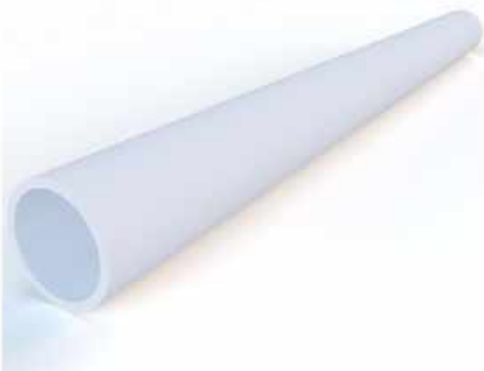


Code	Description	Weight
BTU10001	Flexible Hose 19/25mm 30m Long	7.50kg
BTU10002	Flexible Hose 25/31mm 30m Long	9.56kg
BTU10003	Flexible Hose 38/44mm 30m Long	14.50kg

Rapid Bar Tie An exceptionally versatile and cost-effective tie

Components

Rapid Bar Tie Plastic Conduit Tube



Code	Description	Weight
BTX10019	Plastic Tube 2m	0.22kg
BTX10009	Plastic Tube - Hi Load 26 / 30 x 2m	0.92kg

Rapid Bar Tie Connector



Code	Description	Weight
BTX10015	Connector - (AWL = 110kN)	0.41kg
BTX10002	Connector - (AWL = 215kN)	0.91kg

Rapid Bar Tie water Bar Connector



Code	Description	Weight
BTX10011	Connector Ribbed - Water Bar AWL = 110kN	0.54kg

Rapid Bar Tie An exceptionally versatile and cost-effective tie

Components

Rapid Bar Tie She-Bolt



Code	Description	Weight
BTX 50700	She-Bolt - Rapid Tie 700mm	1.47kg
BTX50725	She-Bolt Tie 725mm (AWL - 110kN)	1.58kg

Rapid Bar Tie An exceptionally versatile and cost-effective tie



Services

Our service sets us apart...

With over 85 years of experience in the temporary works industry we understand the many and varied challenges that our customers face, whatever the size of your project. Whilst our product range provides us with the capability of supporting your project, it is our people that will make the difference.

Sales Support

Our sales team comprises a vast wealth of experience in the sector, helping us to understand your challenges and the opportunities to save you time and money.

Engineered Drawings

You will be provided with technical recommendations and layout drawings showing a level of detail sufficient to enable straight forward on-site erection. For specifically fabricated items comprehensive operating instructions will be provided.

Customer Service

We work with customers on all scale of projects and as such recognise that your requirements are all different. We provide a level of customer service to suit your requirements ranging from on site training to simple reordering of replacement parts.

Technical Expertise

Every project, large or small, requires unique system design. Our highly skilled team of engineers and technical experts will understand first your requirements, and provide a solution designed to exceed these. We do this through approaching projects with an open mind and a desire to provide the most appropriate solution.

Safety

RMD Kwikform prides itself on the inherent safety of our products and the solutions that we design. The construction industry's greatest asset is its people and we design schemes and solutions with this in mind at all times.



Contacts

RMD KWIKFORM SOUTH AFRICA

HEAD OFFICE

52 Jakaranda St, Plot 22,
Hennospark Centurion 0046
Tel: +27 12 004 1000
Email: info.sa@rmdkwikform.com

CENTURION

52 Jakaranda St, Plot 22,
Hennospark Centurion 0046
Tel: +27 12 681 0360
Email: info.sa@rmdkwikform.com

NELSPRUIT

11 Wilken Street, Rocky Drift,
Nelspruit, Mpumalanga
Tel: +27 13 758 9440/1
Fax: +27 13 758 9450
Email: info.sa@rmdkwikform.com

BLOEMFONTEIN

51 Sand du Plessis Avenue,
Eastoie, Bloemfontein, 9323 SA
Tel: +27 51 406 3220
Email: info.sa@rmdkwikform.com

DURBAN

Unit 1, Greystone off Ramp, 135 Old
North Road, Glen Anil, Durban
Tel: +27 31 569 9060
Email: info.sa@rmdkwikform.com

CAPE TOWN

28 Chardonnay Street, Saxonburg
Park, Kuils River, 75580, Cape Town
Tel: +27 21 300 1400
Email: info.sa@rmdkwikform.com

JOHANNESBURG

El Ridge Business Park, Cnr
Elizabeth & Ridge Road, Boksburg
Tel: +27 11 568 1080
Email: info.sa@rmdkwikform.com

WORLDWIDE CONTACTS

RMD KWIKFORM UNITED KINGDOM

Tel: +44 1922 743743
Fax: +44 1922 743400
Email: info@rmdkwikform.com

RMD KWIKFORM SINGAPORE

Tel: +65 6863 4252
Fax: +65 6863 4275
Email: rmd.singapore@rmdkwikform.com

RMD KWIKFORM QATAR

Tel: +974 4465 3034
Fax: +974 4465 3282
Email: rmd.qatar@rmdkwikform.com

RMD KWIKFORM SAUDI ARABIA

Tel: +966 13 882 5444
Fax: +966 13 882 6460
Email: rmd.ksa@rmdkwikform.com

RMD KWIKFORM IRELAND

Tel: +353 (0)1 830 2500
Fax: +353 (0)1 830 2741
Email: info@rmdkwikform.com

RMD AUSTRALIA

Tel: +61 (0) 8 8179 8200
Fax: +61 (0) 8 8179 8201
Email: rmd.australia@rmdformwork.com

RMD KWIKFORM PHILIPPINES

Tel: +632 696 7635
Fax: +632 661 6456
Email: rmd.manila@rmdkwikform.com

RMD KWIKFORM BAHRAIN

Tel: +973 1738 2724
Fax: +973 1738 2624
Email: rmd.bahrain@rmdkwikform.com

RMD KWIKFORM INDIA

Tel: +91 44 4915 3333
Fax: +91 44 4207 9334
Email: rmd.india@rmdkwikform.com

RMD KWIKFORM ESPAÑA

Tel: +34 91 555 6104
Fax: +34 91 555 4745
Email: rmd.madrid@rmdkwikform.com

RMD KWIKFORM HONG KONG

Tel: +852 2415 4882
Fax: +852 2745 0232
Email: rmd.hongkong@rmdkwikform.com

RMD KWIKFORM UAE

Tel: +971 6 553 4173
Fax: +971 6 553 4327
Email: rmd.uae@rmdkwikform.com

RMD KWIKFORM OMAN

Tel: +968 2449 6037
Fax: +968 2449 5836
Email: rmd.oman@rmdkwikform.com

RMD KWIKFORM USA

Tel: +1 303 252 7000
Fax: +1 303 252 7319
Email: usa@rmdkwikform.com

RMD KWIKFORM DBME

Tel: +971 6 553 4173
Fax: +971 6 553 4327
Email: rmd.me@rmdkwikform.com