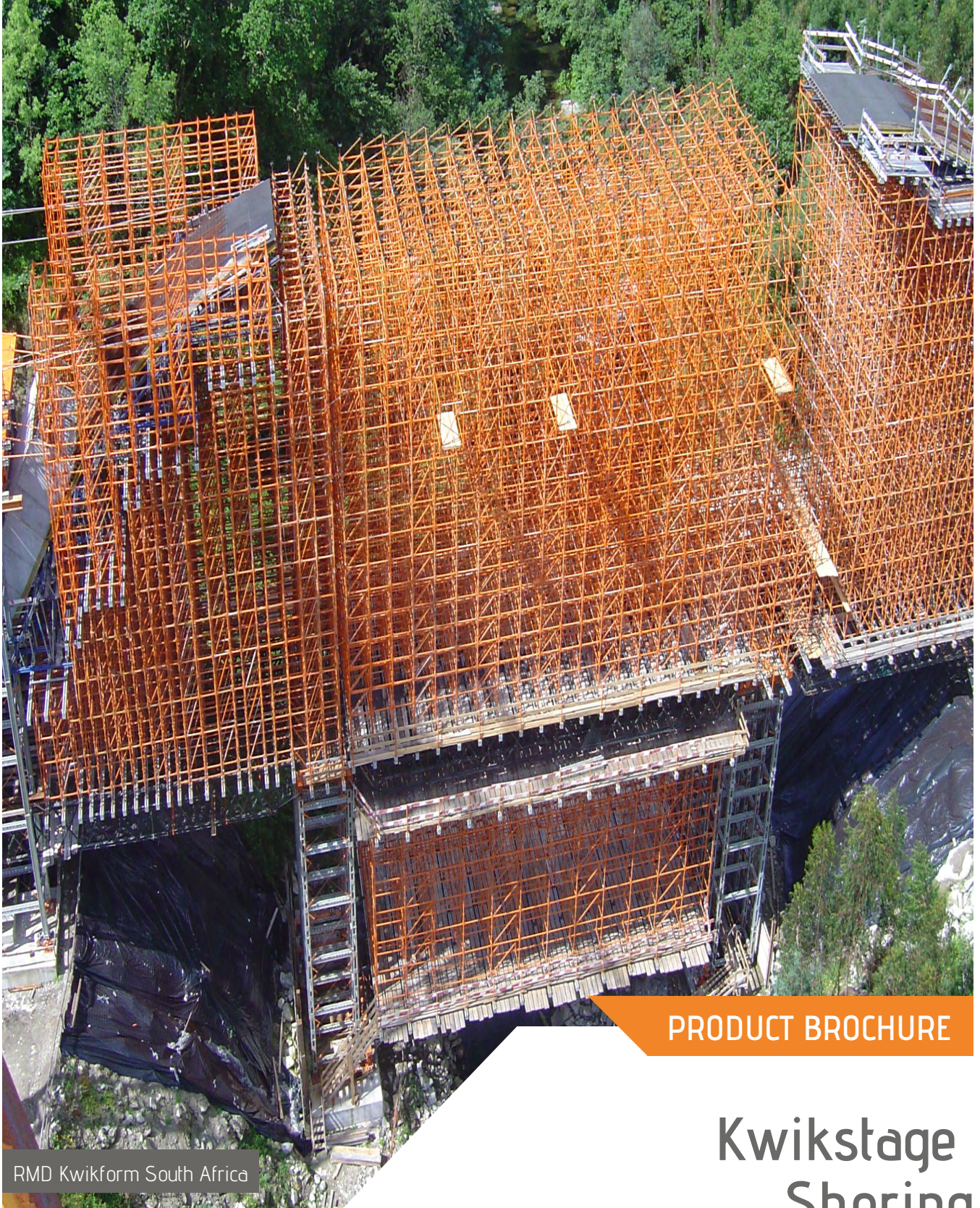


R·M·D  
KWIKFORM

Bringing  
structures  
to life



PRODUCT BROCHURE

Kwikstage  
Shoring

RMD Kwikform South Africa



# Kwikstage Shoring A modular steel shoring system



## Product Overview

A modular steel shoring system which provides a fast, efficient and versatile method of constructing support structures.

### Faster

- Ledgers and transoms are fixed to the vertical standards using captive wedge connections which eliminates the need for transverse bracing
- Unique shoring tie and trigger brace makes Kwikstage one of the fastest steel falsework systems to erect
- Modular system, easy and quick to erect - accommodates sloping ground and varying slab levels

### Safer

- Simple erection procedures ensures stringent safety levels can be easily achieved
- A comprehensive range of accessories handrails, hop-up brackets, staircase towers and loading bays, provide safe and secure access at all times

### Easier

- Captive connector reduces losses and increases productivity compared to traditional tube and fitting scaffold
- Simple to maintain with no screw threads which maximises the life of the product and minimises service costs





## Applications

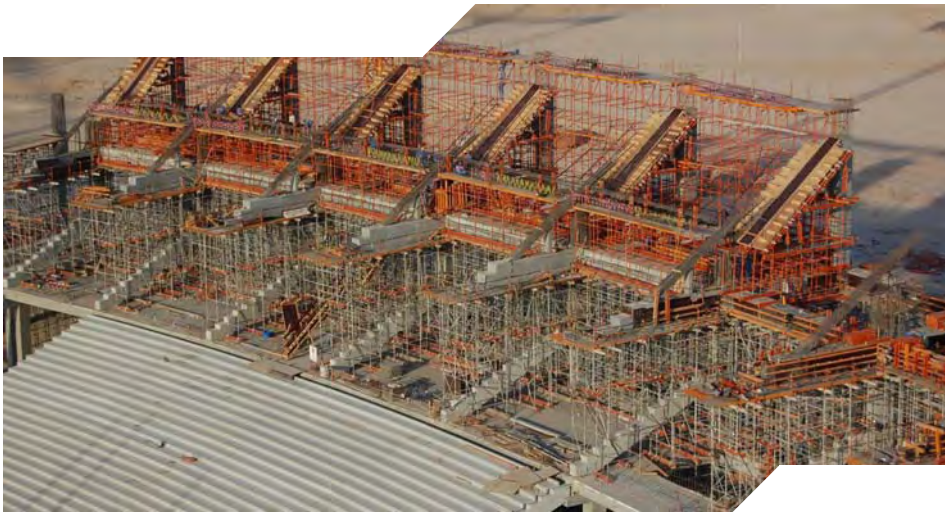
Kwikstage's modular bay sizes, wedge fixings and snap on braces make it highly cost effective for:

- Bridge Decks
- Viaducts
- Commercial / Retail Buildings
- Culverts
- Tunnels
- Turbine Pedestals
- Reservoirs
- Loading Platforms





# Kwikstage Shoring A modular steel shoring system



## Features & Benefits

Fast, efficient and versatile method of constructing support structures using standard Kwikstage components.

- **Leg capacity up to 75kN**  
Means fewer standards saving material and labour costs, with reductions in the number of strip foundations and primary formwork beams.
- **A modular system which is easy and quick to erect**  
Accommodates sloping ground and varying slab levels.
- **Regular patterns of snap on braces**  
Reduces both erection and inspection times.
- **Unique shoring tie and trigger brace**  
Makes Kwikstage one of the fastest steel falsework systems to erect.
- **Tilting heads and bases**  
Eliminates the need for use of timber wedges to overcome sloping ground and elevated slabs.
- **Reduced weight of equipment and reduced number of components**  
Reduces cost of materials and labour.



# Kwikstage Shoring A modular steel shoring system



## In Detail



### Quick & easy

Quick and easy to erect - ledgers and transoms are fixed to the vertical standards using captive wedge connections, eliminating the need for transverse bracing.



### No loose fittings

Captive connector means reduced losses and increased productivity compared to traditional tube and fitting scaffold.



### Adaptability

Kwikstage will allow the user to follow most building profiles by just using the basic components.



### Simple

Simple erection procedures ensure stringent safety levels can be easily achieved.



### Accessories

A comprehensive range of accessories for handrails, hop-up brackets, staircase towers and loading bays, providing safe and secure access at all times.

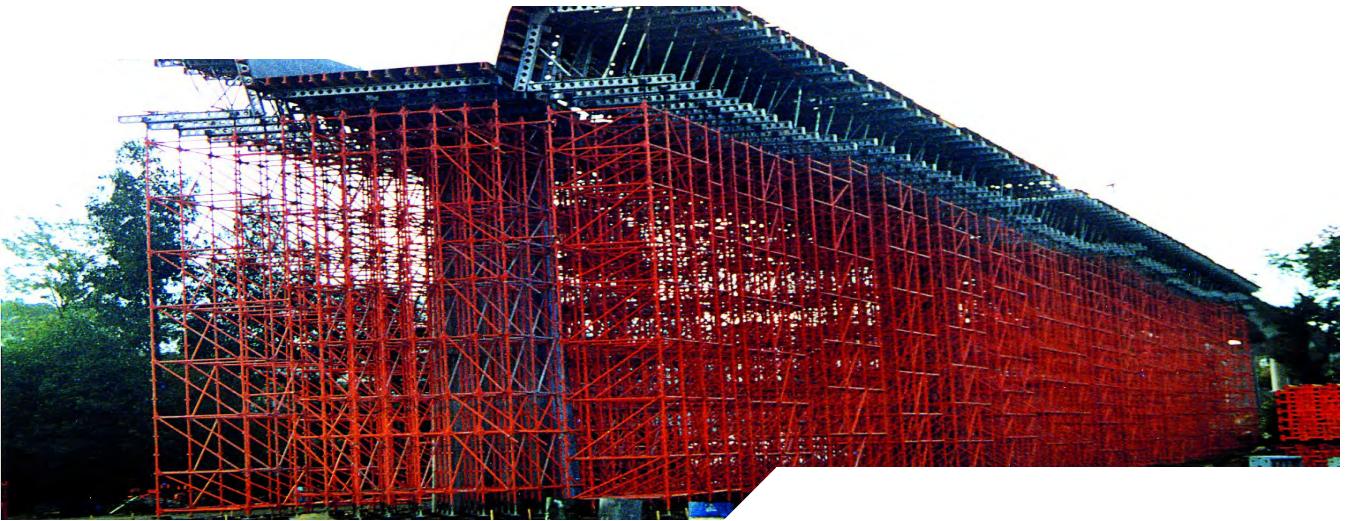


### Simple to maintain

No screw threads, leads to maximising the life of the product and minimising service costs.



# Kwikstage Shoring A modular steel shoring system



## Project References



**PROJECT**  
Buxton Cement Works

**REGION**  
Europe

**STRUCTURES**  
Industrial

# Kwikstage Shoring A modular steel shoring system

## Components

### Shoring 55



Code	Description	Weight
KPX31000	Kwikstage Standard OE 991mm	5.21kg
KPX31500	Kwikstage Standard OE 1486mm	7.81kg
KPX32000	Kwikstage Standard OE 1981mm	10.4kg
KAX32000	Kwikstage Standard 1981mm	11.6kg
KAX33000	Kwikstage Standard 2972mm	16.8kg

SWL = 55kN with Ties at 1.5m (Nominal) Centres, AWL = 40kN with Ties at 2.0m (Nominal) Centres

### Shoring 75



Code	Description	Weight
KSX40100	Shoring Standard - OE HD 991mm	5.2kg
KSX40150	Shoring Standard - OE HD 1486mm	7.82kg
KSX40200	Shoring Standard - OE HD 1981mm	10.41kg
KSX40300	Shoring Standard - OE HD 2972mm	15.62kg
KSX10200	Shoring Standard - HD 1981mm	11.23kg
KSX10300	Shoring Standard - HD 2972mm	16.44kg
KSX10005	Shoring Pigot - HD	0.8kg
KAX10012	Connector - Roll Pin	0.02kg

SWL = 75kN With Ties at 1.5m (Nominal) Centres, SWL = 64kN with Ties at 2.0m (Nominal) Centres

# Kwikstage Shoring A modular steel shoring system

## Components

### Diagonal Braces



Code	Description	Weight
KAX62744	Kwikstage Brace - Diagonal 9ft (2745mm)	11.1
KAX63658	Kwikstage Brace - Diagonal 12ft (3660mm)	13.8

### Kwikstage Shoring Jack Brace



Code	Description	Weight
KSX10006	Jack Brace 800mm - 1300mm	5.13kg
KSX10007	Jack Brace 1118mm - 1929mm	7.28kg
KSX10008	Jack Brace 1939mm - 2750mm	9.69kg

Adjustable trigger brace for use with extended base and head jacks and decking dropheads. This brace can be fixed before final levelling. After final jack adjustment the brace is locked by the integral half coupler.

### Kwikstage Shoring Sloping Head Unit



Code	Description	Weight
KSX10012	Sloping Head Unit	4.73kg



# Kwikstage Shoring A modular steel shoring system

## Components

### Kwikstage Shoring Adjustable 'U' Head



Code	Description	Weight
KPX60006	U Head HD - Adjustable	9.1kg
KPX60007	U Head - Short Adjustable	7.97kg

Closed dimension of 134mm and when fully open 729mm.

### Kwikstage Shoring Adjustable Spigot Jack



Code	Description	Weight
KSX10014	Spigot Jack - Shor Adj	7.14kg
KSX10017	Spigot Jack - Hollow	3.61kg

Used with Kwikstage Shoring at the top of the falsework with either a Sloping Head Unit or Shoring 'U' Head. It can also be used at the base of the falsework with the Slopping Base Unit. Closed dimension of 72mm and when fully open 632mm.

### Kwikstage Shoring Adjustable Base Jack



Code	Description	Weight
KPX20003	Base - Short Adjustable	4.3kg
KPX20005	HD Socket Base 2ft	4.15kg

Closed dimensions of 140mm and when fully open 735mm. It may be used either in the bottom of a standard or inverted into the top of an open-ended standard.

## Components

Shoring 'U' Head



Code	Description	Weight
KSX10013	U Head	5.85kg

Spigot Adaptor & Pin Assembly



Code	Description	Weight
KSX10018	Spigot Adaptor	0.7kg
KSX10011	Pin Assembly	0.14kg

Shoring 55 Only

Sloping Base Unit



Code	Description	Weight
KSX10016	Sloping Base Unit	4.02kg



## Components

### Trigger Base



Code	Description	Weight
KSX31218	Trigger Brace - 1218mm - Light Blue	4.43kg
KSX31643	Trigger Brace - 1643mm - Grey	5.75kg
KSX31418	Trigger Brace - 1418mm - Green	5.05kg
KSX31795	Trigger Brace - 1795mm - Buff	6.22kg
KSX32221	Trigger Brace - 2221mm - Purple	7.53kg
KSX31901	Trigger Brace - 1901mm - Black	6.54kg
KSX32195	Trigger Brace - 2195mm - Brown	7.46kg
KSX32554	Trigger Brace - 2554mm - Orange	8.56kg
KSX32438	Trigger Brace - 2438mm - Blue	8.21kg
KSX32673	Trigger Brace - 2673mm - Red	8.93kg
KSX32973	Trigger Brace - 2973mm - White	11.3kg

Diagonal members which connect to shoring ties. Designed to speed up erection and provide a positive location at the nodes to ensure full bracing in all directions. Pins at each end are located in the holes in the cast ends of the shoring ties and lock into position by a spring-loaded trigger device.

### Sloping Base Boot



Code	Description	Weight
KSX10015	Sloping Base Boot	8.20kg

## Components

Shoring Adaptor



Code	Description	Weight
KSX10009	Shoring Adaptor	1.29kg



# Kwikstage Shoring A modular steel shoring system



## Services

### Our service sets us apart..

With over 85 years of experience in the temporary works industry we understand the many and varied challenges that our customers face, whatever the size of your project. Whilst our product range provides us with the capability of supporting your project, it is our people that will make the difference.

#### Sales Support

Our sales team comprises a vast wealth of experience in the sector, helping us to understand your challenges and the opportunities to save you time and money.

#### Engineered Drawings

You will be provided with technical recommendations and layout drawings showing a level of detail sufficient to enable straight forward on-site erection. For specifically fabricated items comprehensive operating instructions will be provided.

#### Customer Service

We work with customers on all scale of projects and as such recognise that your requirements are all different. We provide a level of customer service to suit your requirements ranging from on site training to simple reordering of replacement parts.

#### Technical Expertise

Every project, large or small, requires unique system design. Our highly skilled team of engineers and technical experts will understand first your requirements, and provide a solution designed to exceed these. We do this through approaching projects with an open mind and a desire to provide the most appropriate solution.

#### Safety

RMD Kwikform prides itself on the inherent safety of our products and the solutions that we design. The construction industry's greatest asset is its people and we design schemes and solutions with this in mind at all times.



# Kwikstage Shoring

A modular steel shoring system

## Contacts

### SOUTH AFRICA OFFICES

#### Head Office

52 Jakaranda St, Plot 22,  
Hennospark Centurion 0046  
Tel: +27 12 004 1000  
Email: [infos@rmdkwikform.com](mailto:infos@rmdkwikform.com)

#### Bloemfontein

51 Sand du Plessis Avenue, Estoire,  
Bloemfontein, 9323, SA  
Tel: +27 51 406 3220  
Email: [infos@rmdkwikform.com](mailto:infos@rmdkwikform.com)

#### Centurion

52 Jakaranda St, Plot 22, Hennospark  
Centurion 0046  
Tel: +27 12 681 0360  
Email: [infos@rmdkwikform.com](mailto:infos@rmdkwikform.com)

#### Cape Town

28 Chardonnay Street, Saxonburg Park, Kuils  
River 7580  
Tel: +27 21 300 1400  
Fax: +27 87 809 6069  
Email: [infos@rmdkwikform.com](mailto:infos@rmdkwikform.com)

#### Durban

Unit 1 Greystone Off Ramp, 135 Old  
North Road, Glen Anil  
Tel: +27 31 569 9060  
Email: [infos@rmdkwikform.com](mailto:infos@rmdkwikform.com)

#### Johannesburg

El Ridge Business Park, Cnr  
Elizabeth & Ridge Road, Boksburg  
Tel: +27 11 568 1080  
Fax: +27 87 809 5965  
Email: [infos@rmdkwikform.com](mailto:infos@rmdkwikform.com)

#### Nelspruit

11 Wilken Street, Rocky Drift, Nelspruit/  
Mbombela Mpumalanga  
Tel: +27 13 758 9440/1  
Fax: +27 13 758 9450  
Email: [infos@rmdkwikform.com](mailto:infos@rmdkwikform.com)

### WORLDWIDE CONTACTS

#### EUROPE

##### United Kingdom

Tel: +44 1922 743743  
Fax: +44 1922 743400  
Email: [info@rmdkwikform.com](mailto:info@rmdkwikform.com)

##### Ireland

Tel: +353 1 830 2500  
Fax: +353 1 830 2522  
Email: [rmdublin@rmdkwikform.com](mailto:rmdublin@rmdkwikform.com)

##### Portugal

Tel: +351 21 232 86 88  
Fax: +351 21 231 57 15  
Email: [rmdlisboa@rmdkwikform.com](mailto:rmdlisboa@rmdkwikform.com)

##### Spain

Tel: +34 91 5556 104  
Fax: +34 91 5554 745  
Email: [rmdmadrid@rmdkwikform.com](mailto:rmdmadrid@rmdkwikform.com)

#### MIDDLE EAST

##### UAE Sharjah

Tel: +971 6 553 4173  
Fax: +971 6 553 4327  
Email: [rmduae@rmdkwikform.com](mailto:rmduae@rmdkwikform.com)

##### Bahrain

Tel: +973 1738 2724  
Fax: +973 1738 2624  
Email: [rmdbahrain@rmdkwikform.com](mailto:rmdbahrain@rmdkwikform.com)

##### Lebanon

Tel: +961 545 0214  
Fax: +961 545 5387  
Email: [rmdlebanon@rmdkwikform.com](mailto:rmdlebanon@rmdkwikform.com)

##### Oman

Tel: +968 2449 6037  
Fax: +968 2449 5836  
Email: [rmdoman@rmdkwikform.com](mailto:rmdoman@rmdkwikform.com)

##### Kuwait

Tel: +965 484 5161  
Fax: +965 484 6414  
Email: [rmdkuwait@rmdkwikform.com](mailto:rmdkuwait@rmdkwikform.com)

##### Saudi Arabia - Al Khobar

Tel: +966 3 882 5444  
Fax: +966 3 882 6460  
Email: [rmdksa@rmdkwikform.com](mailto:rmdksa@rmdkwikform.com)

##### Qatar

Tel: +974 4 465 3034  
Fax: +974 4 465 3282  
Email: [rmdqatar@rmdkwikform.com](mailto:rmdqatar@rmdkwikform.com)

#### ASIA PACIFIC

##### Australia

Tel: +61 8 8179 8200  
Fax: +61 8 8179 8201  
Email: [rmdaustralia@rmdkwikform.com](mailto:rmdaustralia@rmdkwikform.com)

##### Hong Kong

Tel: +852 2415 4882  
Fax: +852 2413 4797  
Email: [rmdhongkong@rmdkwikform.com](mailto:rmdhongkong@rmdkwikform.com)

##### Korea

Tel: +82 2 545 2484  
Fax: +82 2 545 1878  
Email: [rmdseoul@rmdkwikform.com](mailto:rmdseoul@rmdkwikform.com)

##### New Zealand

Tel: +64 9 276 5955  
Fax: +64 9 276 6732  
Email: [rmdaukland@rmdkwikform.com](mailto:rmdaukland@rmdkwikform.com)

##### Philippines

Tel: +632 724 42 13  
Fax: +632 724 42 14  
Email: [rmdmanila@rmdkwikform.com](mailto:rmdmanila@rmdkwikform.com)

##### Guam

Tel: +671 988 7038  
Fax: +671 647 7635  
Email: [rmdkwikformguam@teleguam.com](mailto:rmdkwikformguam@teleguam.com)

#### NORTH & SOUTH AMERICA

##### USA

Tel: +1 303 252 7000  
Fax: +1 303 252 7319  
Email: [usa@rmdkwikform.com](mailto:usa@rmdkwikform.com)

##### Chile

Tel: +56 2714 9800  
Fax: +56 2714 9800  
Email: [rmdchile@rmdkwikform.com](mailto:rmdchile@rmdkwikform.com)

##### Panama

Tel: +507 661 85 615  
Email: [rmdpanama@rmdkwikform.com](mailto:rmdpanama@rmdkwikform.com)

[www.rmdkwikform.com](http://www.rmdkwikform.com)

Our policy is one of continuous improvement and we reserve the right to challenge, alter or modify any detail, design, weight, dimension or code without prior notice being given.

The arrangements of equipment shown in photographs may have been assembled by others and therefore not reflect current best working practices or legislation requirements.

A member of Interserve Plc.