



R·M·D  
KWIKFORM

ALSHOR PLUS

## people make the difference

RMD Kwikform is a powerful team comprising the skills, experience and energy of over 1,000 men and women in 16 countries. Totally diverse in nationality, culture, language and background. Totally united in the pursuit of customer satisfaction.



The unique dome-lock base plate allows a combination of 10 and 2.5 degrees of rotation, eliminating eccentricity by accommodating cross falls in the slab and at the same time retaining the verticality of the leg support, allowing the safe support of high loads.



## alshor plus

Alshor Plus is the next generation of a proven aluminium shoring system. Having leg **loading of up to 120kN/leg**, this system provides a high performance, aluminium shoring system, with increased **safety** features, improved on-site **versatility** and greater **cost effectiveness**.

It's the result of over 60 years experience gained on major projects throughout the world. What's more, our network of local branches means when you deal with RMD Kwikform, you talk to people who understand the working environment, technical difficulties and challenges you face.

The use of steel spigots provides fast and secure leg to outer leg connection, avoiding the use of 4 or 6 bolts per connection, allowing greater speed in the make up of the shoring legs.

### PLUS



The blade and pocket design of the connection between legs and frames provides a secure, visibly safe and quick connection, allowing the frame to be installed or removed whilst assembled.



**Main Contractor:**  
Bovis Lend Lease.

**Project:**  
Paddington Central  
Development,  
London, UK.



**Client:**  
Urban Splash.

**Project:**  
The Chips Building  
UK.



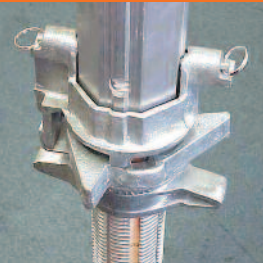
The increased performance of Alshor Plus will allow even greater support to shoring and formwork applications, including:

- Static slab support.
- Towers and high reach birdcage assemblies.
- Mobile tables.
- Flying tables.
- Props and back propping.
- Airotek decking equipment



Integral measuring tape embedded in the screw jack ensures accuracy of build, speeding-up assembly and in-use adjustment.

Variable load capacity up to 120kN/leg, depending on number of frames in height, extended length of screw jack and overall height of propping, allows economic designs through many assembly options, by choosing different grid sizes and the minimum number of ledger frames in height



**Client:**  
Grocon.

**Project:**  
MCG Redevelopment,  
Melbourne, Australia.

The Alshor Plus screw jack is capable of supporting loads up to 120kN. The unique extruded grooves in the long screw jack self clean the jack and also prevent rotation of the jack when inserted in the outer leg, making adjustment quick and easy. Rapid striking is enabled by use of the unique load release mechanism.





**Client**  
Balfour Beatty.

**Project**  
M77,  
Glasgow, UK.

The innovative design and unique features of Alshor Plus ensures a quick and easy installation of ledger frames with a single operation, eliminating the need for multiple T-bolt or claw connections.

## features and benefits

■ **Increased load capacity**, reducing support equipment and improving fix/strike times, **allowing fast erection and easy in-situ modification, reducing site delays and construction costs.**

■ **Variable ledger frame position** and greater propping range **allows greater versatility for better high and low level support.**

■ **Additional safety features** such as: aluminium/ply access platforms, integral ladder access, and ledger frame pockets designed at 500mm centres, allowing the use of additional handrails, **increasing on-site safety when using Alshor Plus.**



With 5 leg lengths - 1.25m, 1.5m, 2.0m, 3.0m and 4.0m - with ledger frame pockets at 500mm centres, the number of components and erection time has been reduced for virtually every propping height.



The four start thread provides rapid jack adjustment with 25mm of movement for every 360 degree rotation of the collar throughout the 1250mm threaded portion of the jack.



The unique load release mechanism gives a quick and effective release of load, allowing easy rotation of jack collar, without the need for spanners. This also eliminates the regular maintenance and damage problems experienced with systems without this feature.





**Client:**  
Dunne Building & Engineering.

**Project:**  
Holm Street, UK.

**Client:**  
CAMBBA.

**Project:**  
M6 Toll,  
Midlands, UK.



**PLUS**

Standard platforms accommodate all ledger frame sizes, from partially to fully boarded platforms, with an integral internal ladder access and trap door platform providing safe and secure access to multiple level working.



Sloping head applications.

- Alshor Plus is a **fully integrated system**, and can be easily combined with primary and secondary Aluminium Beams to provide the **most effective and cost competitive support to soffit formwork**.
- **A simple, single action** connects and secures all four blades simultaneously, making Alshor Plus frames the **quickest frames to erect**.
- **Increased extension range** of the short and long jacks **allow Alshor Plus greater on site flexibility**.
- Alshor Plus has been designed to increase the speed of erection through the **minimal number of loose parts, enhancing cost effectiveness**.

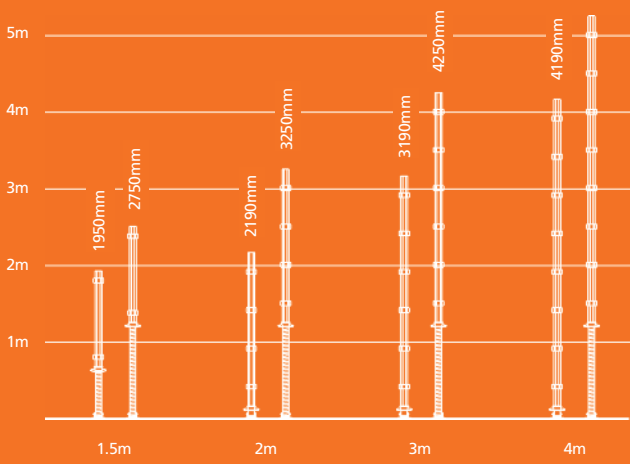


**Client:**  
PC Harrington.

**Project:**  
Wembley  
National Stadium,  
London, UK.

### Single Leg Assemblies

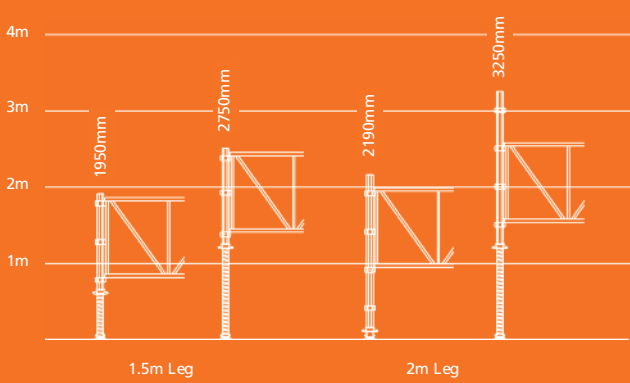
Range 1.95m - 5.25m



Client: Tolent Construction.

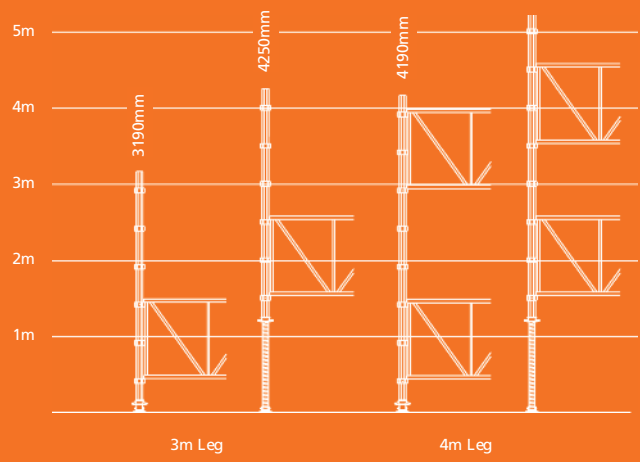
### Single Leg and Frame Assemblies

Loads will vary with position and no. of frames



### Single Leg and Frame Assemblies

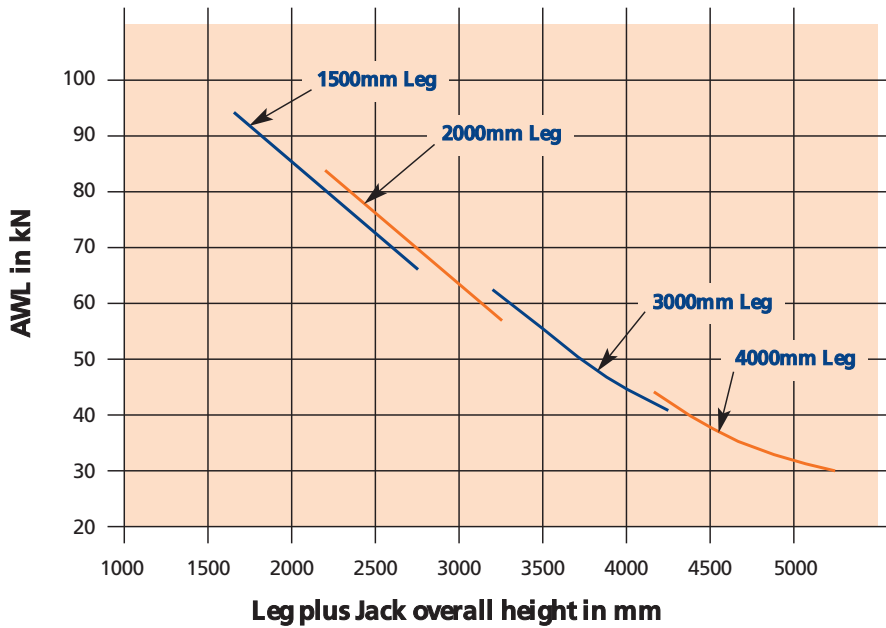
Loads vary with position and no. of frames



Project: The Cube, Newcastle, UK.

### AWL in Single Vertical Alshor Plus props in Fixed at the Head Falsework Applications.

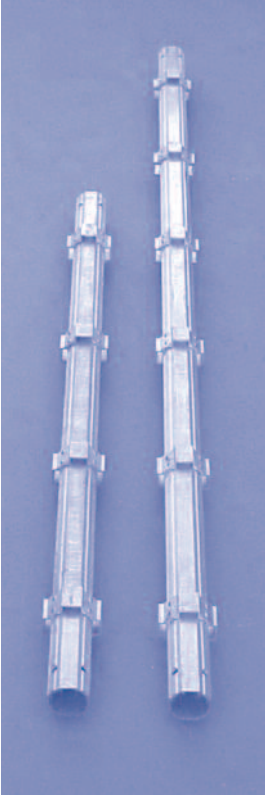
Domed jacks bottom only fixed against rotation, top pinned with a load eccentricity of 5mm (FOS = 2).



Graphs shown illustrate AWL for popular ledger frame and leg assemblies. For other configurations please contact your nearest RMD Kwikform Technical Office.

Loadings illustrated are for supporting formwork. Significant load increases are available when Alshor Plus is used as a back-prop. Please contact your local RMD Kwikform Technical Office for additional guidance.

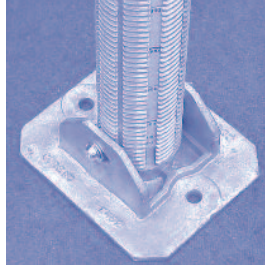
Ensure that the jack end of the structure bears against a foundation that is restrained against rotation, eg, a concrete slab or railway sleepers haunched with concrete. Erect props within 1.5 degrees of plumb.



### Legs

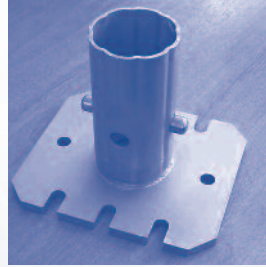
Code	Description	Wt. (Kg)
ASX31500	Alshor Plus Leg 1500mm	7.47
ASX32000	Alshor Plus Leg 2000mm	9.97
ASX33000	Alshor Plus Leg 3000mm	14.97
ASX34000	Alshor Plus Leg 4000mm	19.96
ASX10013	Alshor Plus Spigot 6mm	2.19

ASX10012



### Jacks

Code	Description	Wt. (Kg)
ASX10012	Alshor Plus Jack Adj = 190-1250mm	15.55
ASX10030	Alshor Plus Jack Adj = 120-750mm	11.8



### Base Plates

Code	Description	Wt. (Kg)
ASX10011	Alshor Plus Base 10mm	3.35



ASX32000

### Head Plates

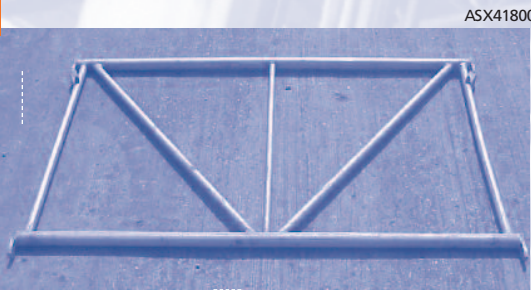
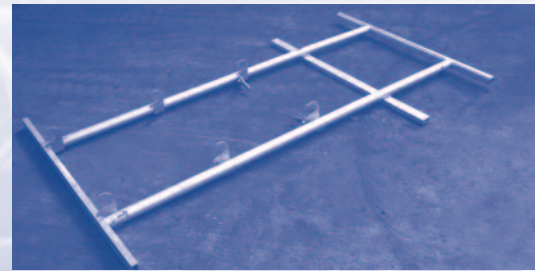
Code	Description	Wt. (Kg)
ASX10023	Alshor Plus U Plate 270 x 220 x 6mm	3.94
ASX10015	Alshor Plus U Head 220 x 10mm	4.73

Use 2N M12x40 CSK bolts & nuts to fix to base plates or jacks.

ASX10015

### Alshor Plus Advancing Handrail

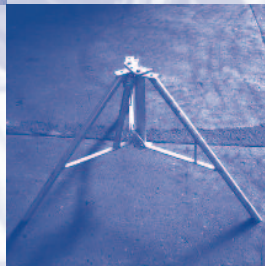
Code	Description	Wt. (Kg)
ASX10057	Advancing Handrail 1200mm	13.35
ASX10058	Advancing Handrail 1800mm	15.69



ASX41800

### Frames

Code	Description	Wt. (Kg)
ASX41200	Alshor Plus Frame 1200mm	8.8
ASX41800	Alshor Plus Frame 1800mm	12.3
ASX42400	Alshor Plus Frame 2400mm	14.6
ASX43000	Alshor Plus Frame 3000mm	17.0



### Leg Brace

Code	Description	Wt. (Kg)
ASX92400	Leg Brace 2400mm - 3000mm	13.96

### Alshor Plus Leg Tripod

Code	Description	Wt. (Kg)
ASX10060	Leg Tripod	11.00

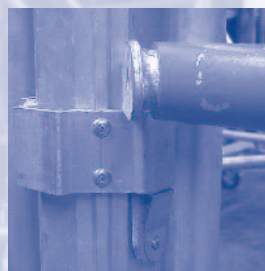


### Ledgers

Code	Description	Wt. (Kg)
ASX81200	Alshor Plus Ledger 1200mm	4.9
ASX81800	Alshor Plus Ledger 1800mm	6.6
ASX82400	Alshor Plus Ledger 2400mm	8.4
ASX83000	Alshor Plus Ledger 3000mm	10.1

### Guardrails and Handrails

Code	Description	Wt. (Kg)
ASX71200	Alshor Plus Handrail 1200mm	3.1
ASX71800	Alshor Plus Handrail 1800mm	4.1
ASX72400	Alshor Plus Handrail 2400mm	4.8
ASX73000	Alshor Plus Handrail 3000mm	5.8



## Trolley

Code	Description	Wt. (Kg)
ASX10014	Alshor Plus Trolley SWL = 500 Kg Range = 1100-2160mm	84.6
SFX10008	Castor Wheel 203	5.0



## Drop Beam Bracket

Code	Description	Wt.(Kg)
ASX10040	Alshor Plus Drop Beam Bracket (SWL = 10 kN)	1.4

## Castor Unit

Code	Description	Wt. (Kg)
ASX10038	Alshor Plus Castor Unit	37.4
ASX10039	Alshor Plus Castor Unit Handle	8.5



## Alshor Superslim Clamp

Code	Description	Wt. (Kg)
ASX10056	Alshor Superslim Clamp	0.68

## Board Bearers

Code	Description	Wt. (Kg)
ASX61200	Alshor Plus Board Bearer 1200mm	5.7
ASX61800	Alshor Plus Board Bearer 1800mm	7.9
ASX62400	Alshor Plus Board Bearer 2400mm	10.0
ASX63000	Alshor Plus Board Bearer 3000mm	15.0



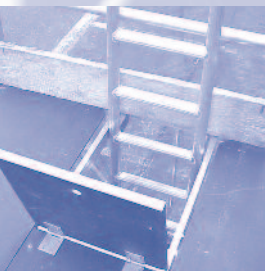
## Ladders

Code	Description	Wt. (Kg)
ASX51000	Alshor Plus Ladder 1000mm	4.1
ASX51500	Alshor Plus Ladder 1500mm	5.5
ASX52000	Alshor Plus Ladder 2000mm	7.0
ASX50001	Alshor Plus Bottom Ladder	5.6
ASX50002	Alshor Plus Starter Ladder	6.0



## Platform

Code	Description	Wt. (Kg)
ASX10043	Alshor Plus Platform 1800x300mm	9.4
ASX10045	Alshor Plus Platform 1800x600mm	12.8
ASX10046	Alshor Plus Platform 2400x300mm	12.1
ASX10048	Alshor Plus Platform 2400x600mm	16.8
ASX10044	Alshor Plus Trap Door Platform 1800x505mm	12.7
ASX10047	Alshor Plus Trap Door Platform 2400x505mm	16.4



## Twin Prong Table C-Hook

Code	Description	Wt. (Kg)
ASX10067	Twin Prong Table C-Hook	1002.0

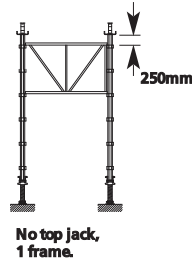
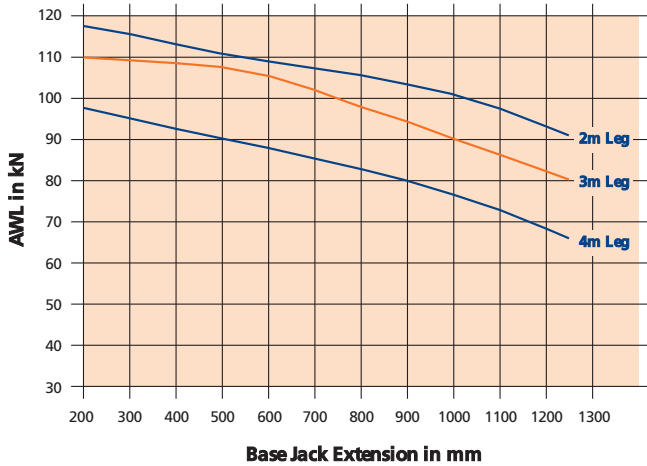






### AWL in Vertical Alshor Plus towers in Fixed at the Head Applications.

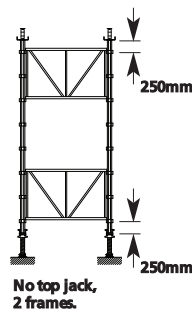
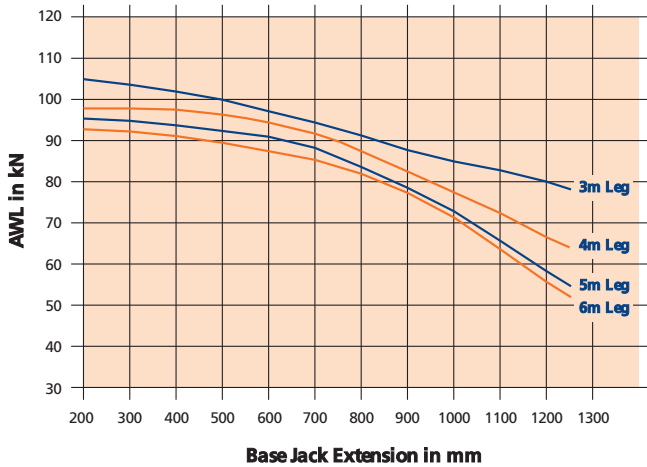
Domed jacks base only, base restrained against rotation, head pinned with a load eccentricity of 5mm (FOS = 2).



Ensure that the base jacks bear on a foundation that is restrained against rotation, eg a concrete slab or railway sleepers haunched with concrete.

### AWL in Vertical Alshor Plus towers in Fixed at the Head Applications.

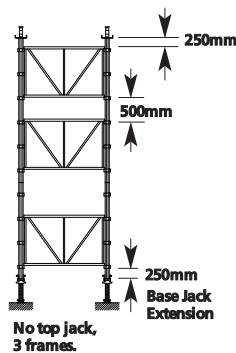
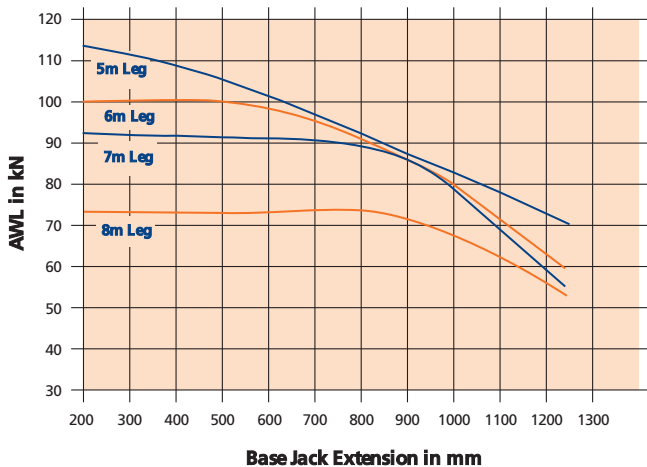
Domed jacks, base restrained against rotation, top pinned with a load eccentricity of 5mm (FOS = 2).



Ensure that the base jacks bear on a foundation that is restrained against rotation, eg a concrete slab or railway sleepers haunched with concrete.

### AWL in Vertical Alshor Plus towers in Fixed at the Head Applications.

Domed jacks, base restrained against rotation, top pinned with a load eccentricity of 5mm (FOS = 2).

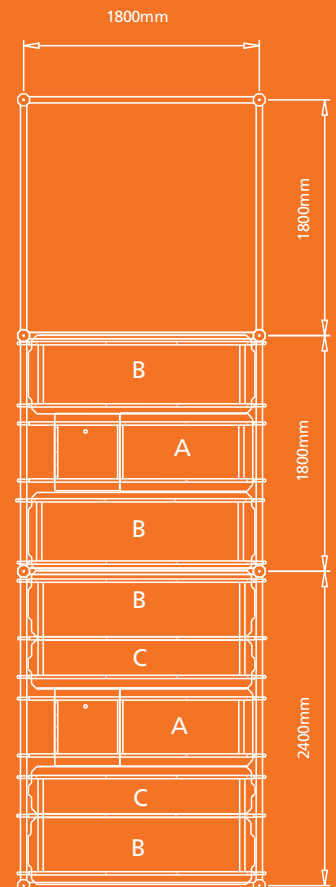


Ensure that the base jacks bear on a foundation that is restrained against rotation, eg a concrete slab or railway sleepers haunched with concrete.

### Drop-in Access Decks

3 No. sizes of decks:

- A = 1800 x 505 Trap Access
- B = 1800 x 600 Platform
- C = 1800 x 300 Platform



## european offices

**United Kingdom**  
RMD Kwikform,  
Brickyard Road, Aldridge,  
Walsall WS9 8BW, UK.  
Tel: +44 1922 743743 Fax: +44 1922 743400  
Email: info@rmdkwikform.com

**Ireland**  
RMD Kwikform,  
Ballyboggan Road, Finglas, Dublin 11, Ireland  
Tel: +353 1 830 2500 Fax: +353 1 830 2522  
Email: rmd.dublin@rmdkwikform.com

**Portugal**  
RMD Kwikform,  
Av 25 de Abril, 32-1º Esquerdo,  
2870-150 Montijo, Portugal  
Tel: +351 21 232 86 88 Fax: +351 21 231 57 15  
Email: rmd.lisboa@rmdkwikform.com

**Spain**  
RMD Kwikform Ibérica SA,  
Paseo del Club Deportivo, 1  
Urbanización La Finca, Edif. 3, 1 Izda.  
28223 Pozuelo de Alarcón, Madrid  
Tel: +34 91 5556 104 Fax: +34 91 5554 745  
Email: rmd.madrid@rmdkwikform.com

## middle east offices

**UAE**  
RMD Kwikform Middle East LLC  
P.O. Box 5801, Sharjah, UAE  
Tel: +971 6 553 4173 Fax: +971 6 553 4327  
Email: rmd.me@rmdkwikform.com

**Abu Dhabi**  
RMD Kwikform,  
PO Box 259, Abu Dhabi, UAE.  
Tel: +971 2 550 2383 Fax: +971 2 550 2384  
Email: rmd.abudhabi@rmdkwikform.com

**Dubai**  
RMD Kwikform Middle East LLC  
P.O. Box 115480, Dubai, UAE  
Tel: +971 4 885 6144 Fax: +971 4 885 6141  
Email: rmd.dubai@rmdkwikform.com

**Bahrain**  
RMD Kwikform (Almoayed) Bahrain LLC  
PO Box 21475, Flat 12, Building 829,  
Road 833, Block 408, Sanabis,  
Kingdom of Bahrain  
Tel: +973 1738 2724 Fax: +973 1738 2624  
Email: rmd.bahrain@rmdkwikform.com

**Lebanon**  
RMD Kwikform.  
PO Box 16-7115, Atco - Hazrmeih,  
3<sup>rd</sup> Floor, Hobeika Centre, Beirut, Lebanon.  
Tel: +961 545 0214 Fax: +961 595 5387  
Email: rmd.lebanon@rmdkwikform.com

**Oman**  
RMD Kwikform Oman LLC  
P.O. Box 889, Post Code 100  
Muscat, Sultanate of Oman  
Tel: +968 246 13571 Fax: +968 246 13573  
Email: rmd.oman@rmdkwikform.com

**Kuwait**  
RMD Kwikform,  
PO Box 42094, Shuwaik 70651, Kuwait  
Tel: +965 2484 5161 Fax: +965 2484 6414  
Email: rmd.kuwait@rmdkwikform.com

**Saudi Arabia**  
RMD Kwikform Saudi Arabia LLC  
Al-Bandariyah Center Office No 611 (Unit 5)  
Building No 3194, Prince Faisal Bin Fahad Road  
Al Khobar 34424 – 8555, Kingdom of Saudi  
Arabia  
Tel: +966 3 882 5444 Fax: +966 3 882 6604  
Email: rmd.ksa@rmdkwikform.com

**Qatar**  
RMD Kwikform (Al Maha) Qatar LLC  
P.O. Box 405, Doha, Qatar  
Tel: +974 465 3034 Fax: +974 465 3282  
Email: rmd.qatar@rmdkwikform.com

## asia pacific offices

**Australia**  
RMD (Australia) Pty. Ltd.  
PO Box 169, Melrose Park,  
South Australia, 5039.  
Tel: +61 8 8179 8200 Fax: +61 8 8179 8201  
Email: rmd.australia@rmdformwork.com

**Hong Kong**  
RMD Kwikform,  
22<sup>nd</sup> Floor Easy Tower,  
609 Tai Nan West Street, Cheung Sha Wan,  
Kowloon, Hong Kong.  
Tel: +852 2415 4882 Fax: +852 2413 4797  
Email: rmd.hongkong@rmdkwikform.com

**Korea**  
RMD Kwikform Co. Ltd, RMD House,  
2<sup>nd</sup> floor, HO Building, 38-16 Jam Won-Dong,  
Secho-Gu, Seoul, Korea, 135-080.  
Tel: +82 2 545 2484 Fax: +82 2 545 1878  
Email: rmd.seoul@rmdkwikform.com

**New Zealand**  
RMD (New Zealand) Ltd.  
PO Box 22-316, 101-105 Station Road,  
Otahuhu, Auckland 6, New Zealand.  
Tel: +64 9 276 5955 Fax: +64 9 276 6732  
Email: rmd.auckland@rmdformwork.com

**Philippines**  
RMD Kwikform,  
Unit 1102, Annapolis Wilshire Plaza,  
#11 Annapolis Street, Greenhill's,  
San Juan, Metro Manila, Philippines.  
Tel: +632 724 42 13 Fax: +632 724 42 14  
Email: rmd.manila@rmdkwikform.com

## south america office

**Chile**  
RMD Kwikform,  
La Estera 811, Parque Industrial Valle  
Grande, Lampa, Santiago de Chile  
Tel: +56 2714 9800 Fax: +56 2714 9800  
Email: rmd.chile@rmdkwikform.com

## south africa office

**South Africa**  
RMD Kwikform South Africa (PTY) Ltd,  
52 Jakaranda St, Hennospark,  
Centurion, Pretoria.  
Tel: +27 12 681 0360 Fax: +27 12 681 0361  
Email: rmd.sa@rmdkwikform.com

Our policy is one of continuous improvement and we reserve the right to change, alter or modify any detail, design, weight, dimension or code without prior notice being given.

[www.rmdkwikform.com](http://www.rmdkwikform.com)

A member of Interserve Plc.

Alshor Plus - Issued January 2010